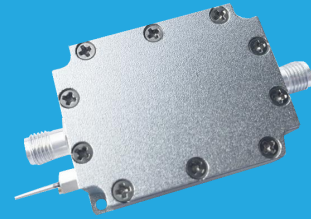


QPA-20-1000-36-18

0.02~1GHz, 36dB, 18dBm

Features:

- * Small Size
- * Low Power Consumption
- * Wireless
- * Transmitter
- * Laboratory Test



Electrical

Frequency:	0.02~1GHz
Gain:	36dB min.
Gain Flatness:	±2.5dB typ.
Output Power (P1dB):	18dBm typ.
Spurious:	-60dBc typ.
Harmonic:	-30dBc typ.
Input VSWR:	2 typ. @20~50MHz 1.35 typ. @50~1000MHz
Output VSWR:	2 typ.
Voltage:	+5V DC
Current:	300mA typ.
Input Power:	-3dBm max.

Mechanical

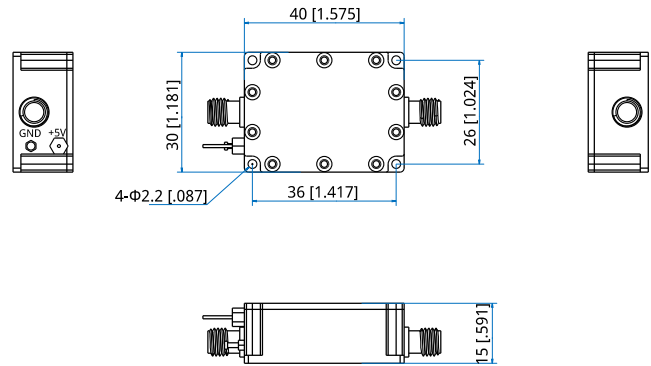
Size*1:	40*30*15mm 1.575*1.181*1.024in
RF Connectors:	SMA Female
Power Supply Connectors:	Feed Through/Terminal Post
Mounting:	4-Φ2.2mm through-hole

[1] Exclude connectors.

Environmental

Operating Temperature: -20~+50°C

Outline Drawings



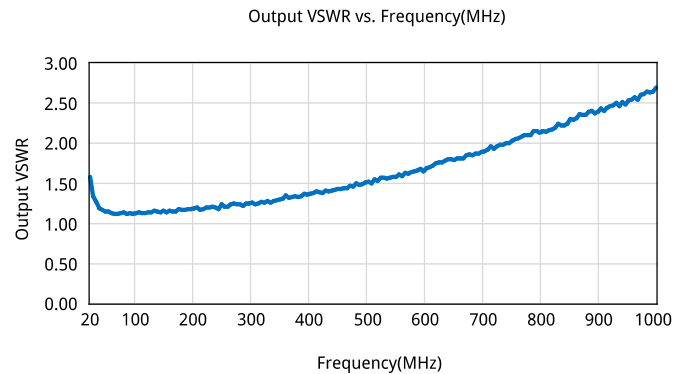
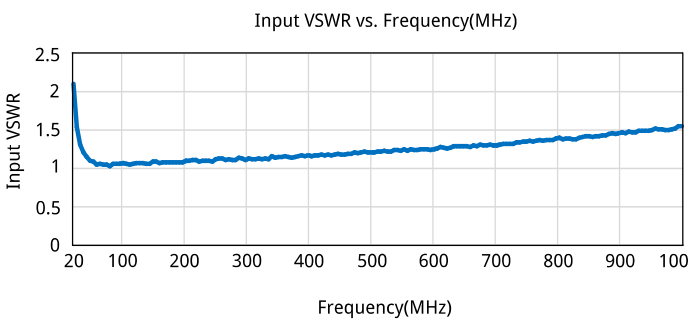
Unit: mm [in]
 Tolerance: ±0.2mm [±0.008in]

How To Order

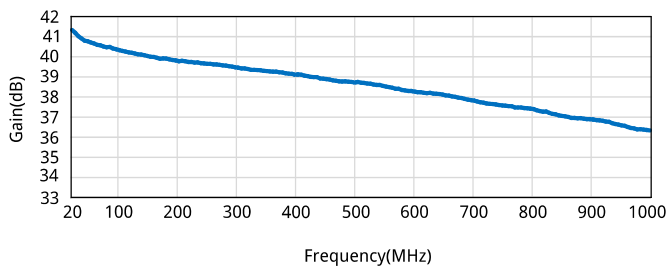
QPA-20-1000-36-18

Customization is available upon request.

Typical Performance Characteristics



Gain(dB) vs. Frequency(MHz)



P1dB(dBm) vs. Frequency(MHz)

